



Special Olympics

Washington

Unified Robotics

**VIRTUAL UNIFIED ROBOTICS
SOFTWARE INSTALLATION!**

Instruction to download Lego Digital Designer, Lego
MINDSTORMS EV3 and Virtual Robotics Toolkit

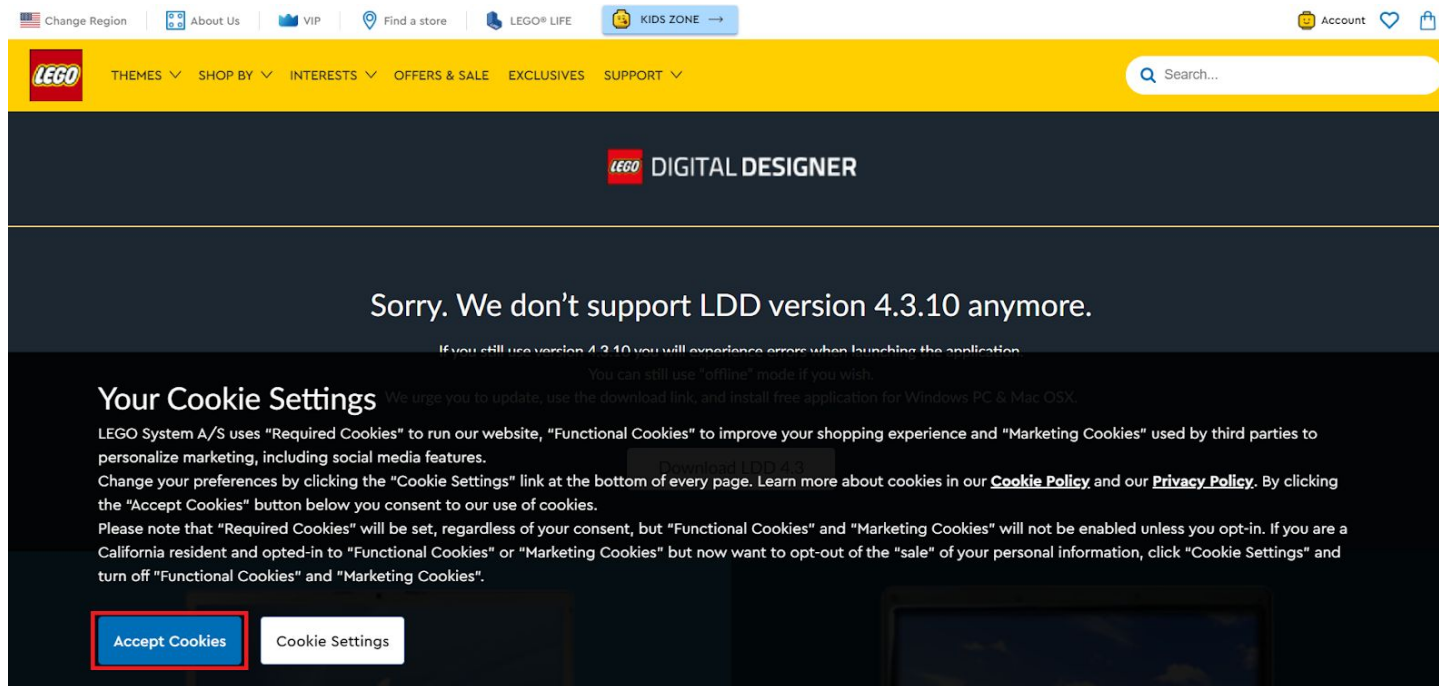
LEGO Digital Designer

1. Go to website:

https://web.archive.org/web/20190622153357/https://lc-www-live-s.legocdn.com/downloads/ldd2.0/installer/set-upLDD-PC-4_3_11.exe

(This may take a moment, and simply start the download. If so, continue to step 3)

If prompted, select "Accept Cookies"



2. Scroll down and select "Download Now" for either a Mac (1) or a Windows (2) PC.

Mac System Requirements:
LEGO Digital Designer 4.3
Minimum system requirements for Mac
Operating system: OS X 10.10 or higher
CPU: Intel processor
Graphics card: NVIDIA GeForce 5200/ATI Radeon 7500 or better RAM: 1 GB
Hard disk space: 1 GB
(1) Download now

Windows System Requirements:
LEGO Digital Designer 4.3
Minimum system requirements for Windows
Operating system: Windows XP, Windows Vista, Windows 7, Windows 8 or Windows 10.
CPU: 1 GHz processor or higher
Graphics card: 128 MB graphics card (OpenGL 1.1 or higher compatible)
RAM: 512 MB
Hard disk space: 1 GB
(2) Download now

3. When ready, open the Setup .exe file

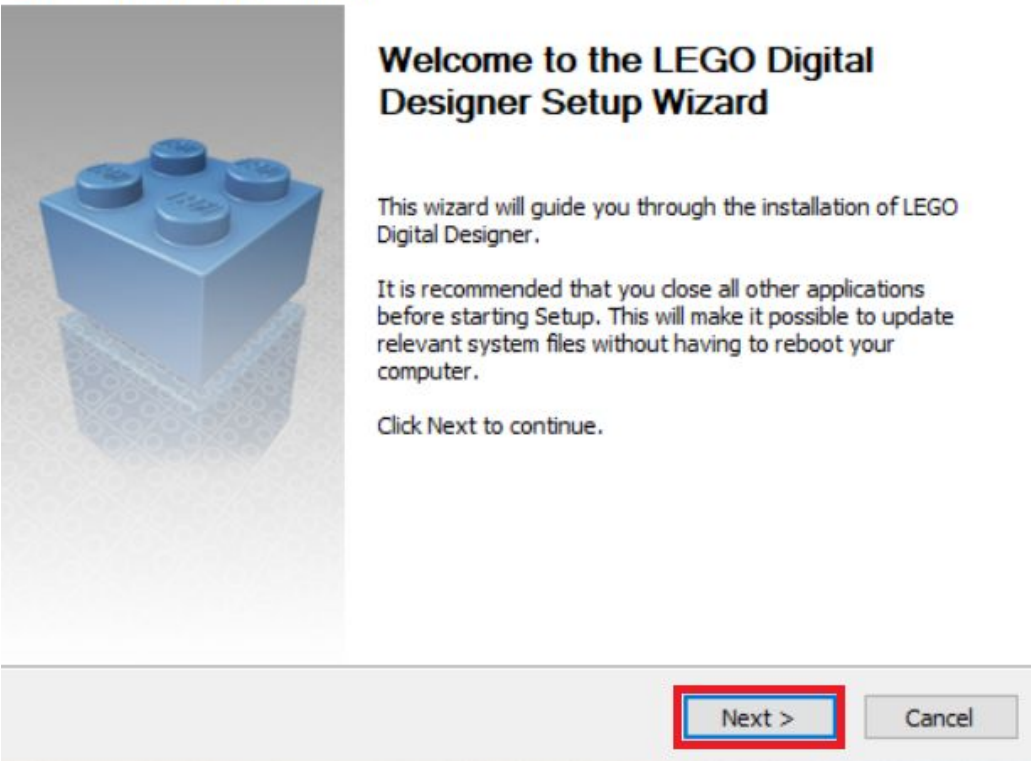
Mac System Requirements:
LEGO Digital Designer 4.3
Minimum system requirements for Mac
Operating system: OS X 10.10 or higher
CPU: Intel processor
Graphics card: NVIDIA GeForce 5200/ATI Radeon 7500 or better RAM: 1 GB
Hard disk space: 1 GB
Download now

Windows System Requirements:
LEGO Digital Designer 4.3
Minimum system requirements for Windows
Operating system: Windows XP, Windows Vista, Windows 7, Windows 8 or Windows 10.
CPU: 1 GHz processor or higher
Graphics card: 128 MB graphics card (OpenGL 1.1 or higher compatible)
RAM: 512 MB
Hard disk space: 1 GB
Download now

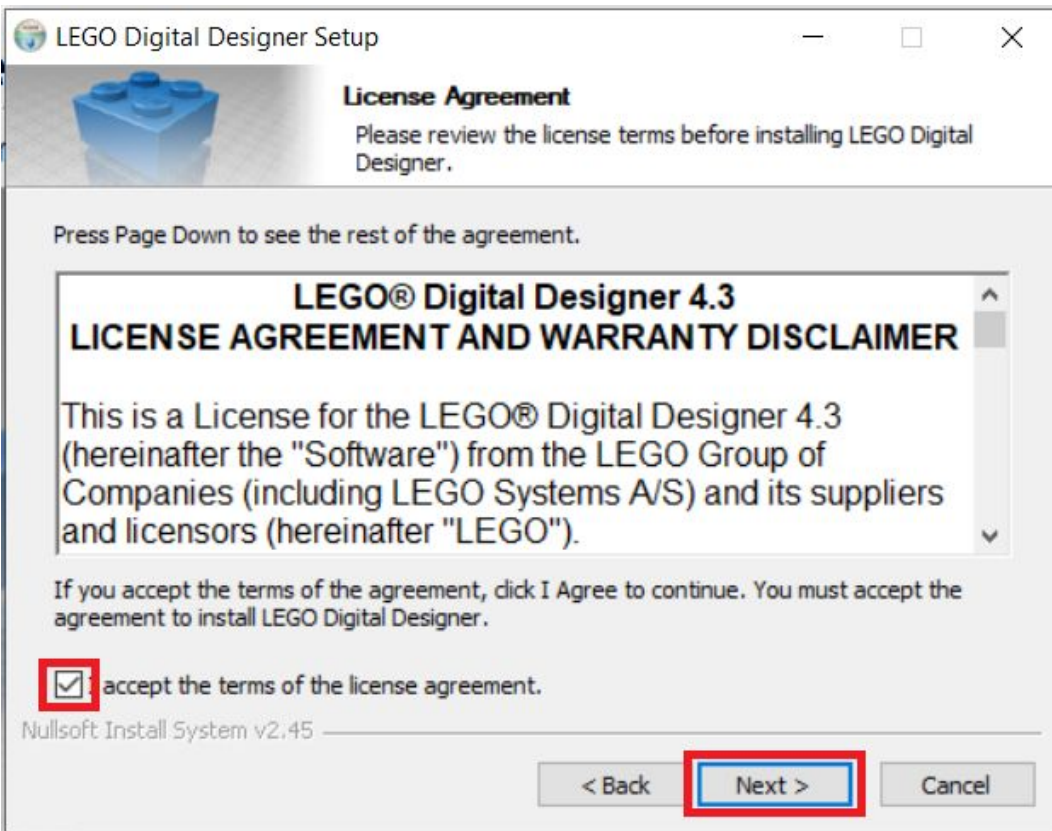
Address bar: https://www.lego.com/assets/franchisesites/idd/installer/setupidd-pc-4_3_12.exe
Taskbar: setupidd-pc-4_3_12.exe

4. If prompted, Select “Yes” to allow the program to make changes to your computer

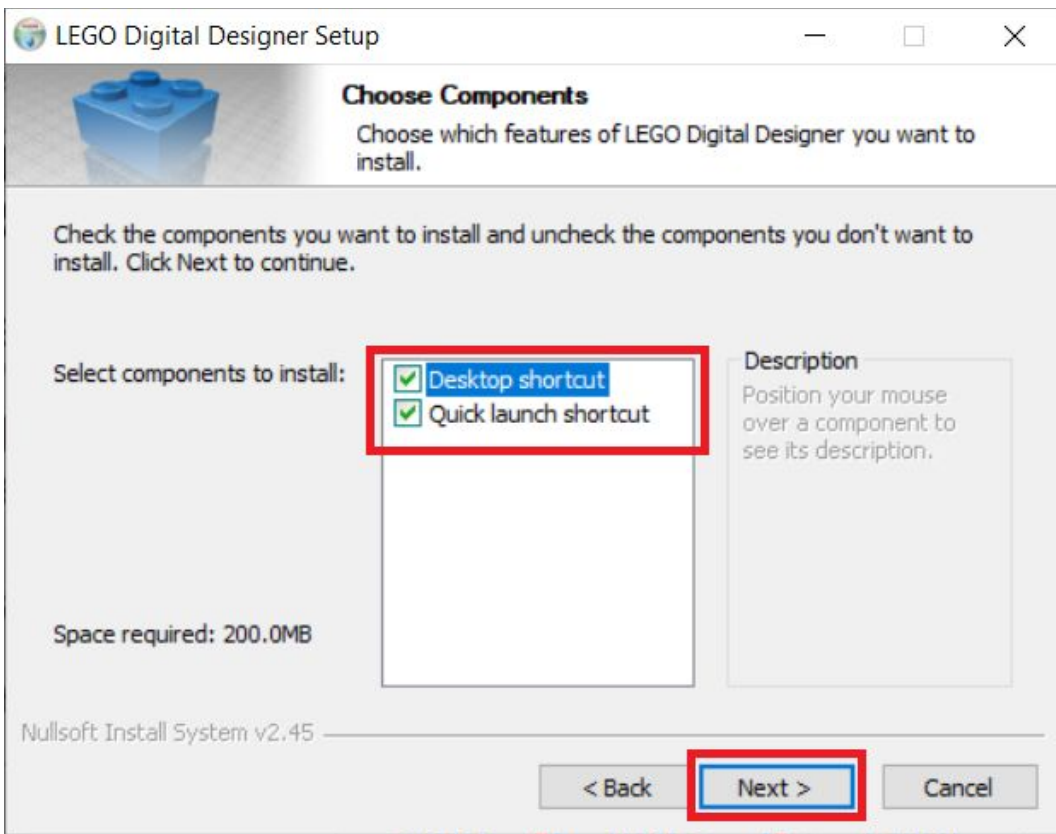
5. Select “Next”



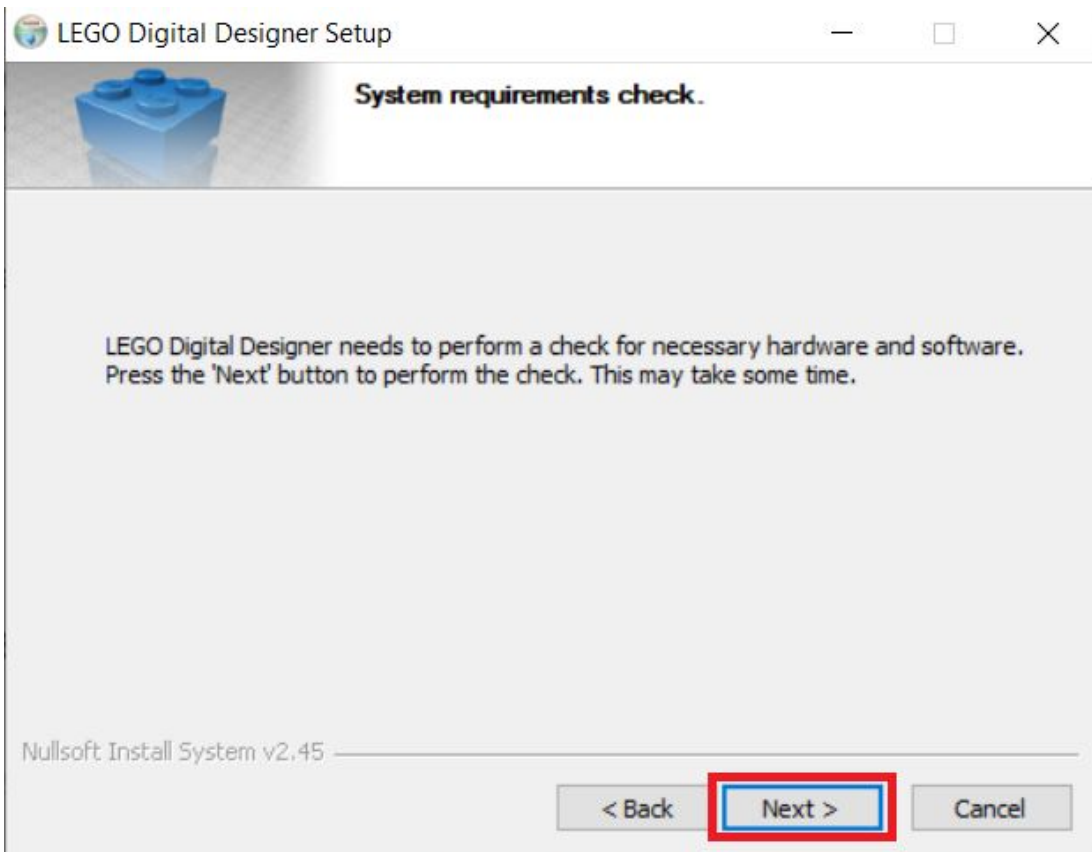
6. Check the box to “Accept the terms of the license agreement” and then select “Next”



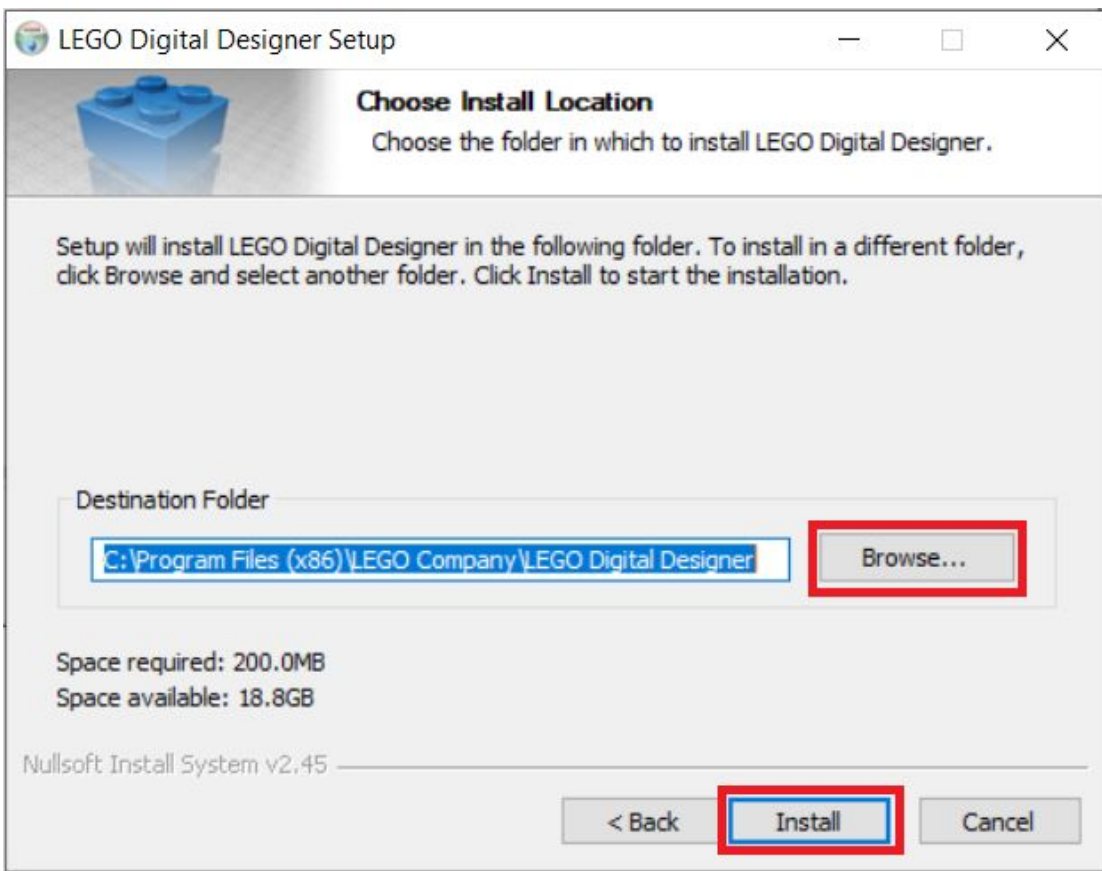
7. Check the boxes for your preferred Shortcut type and then select “Next”



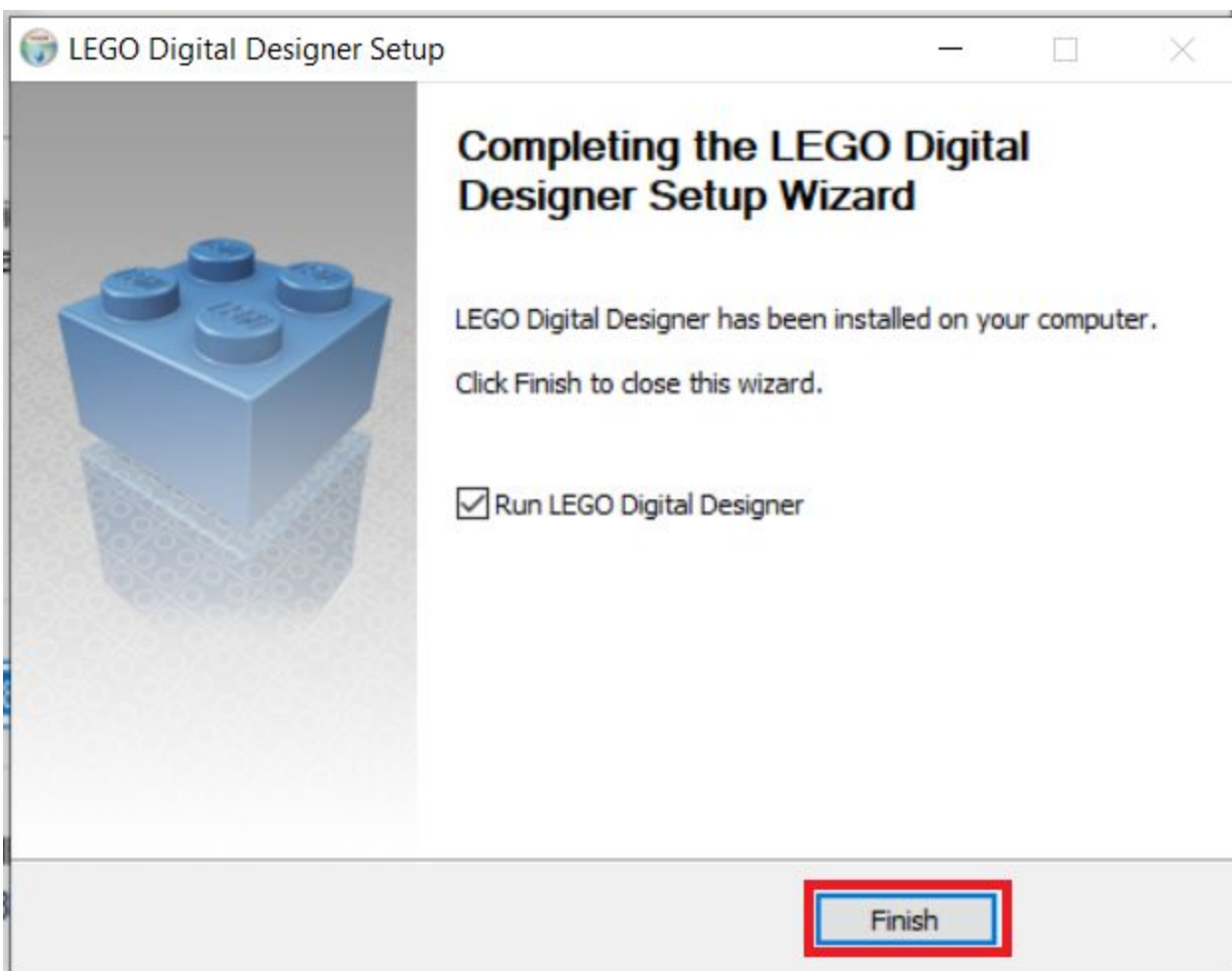
8. Select "Next"



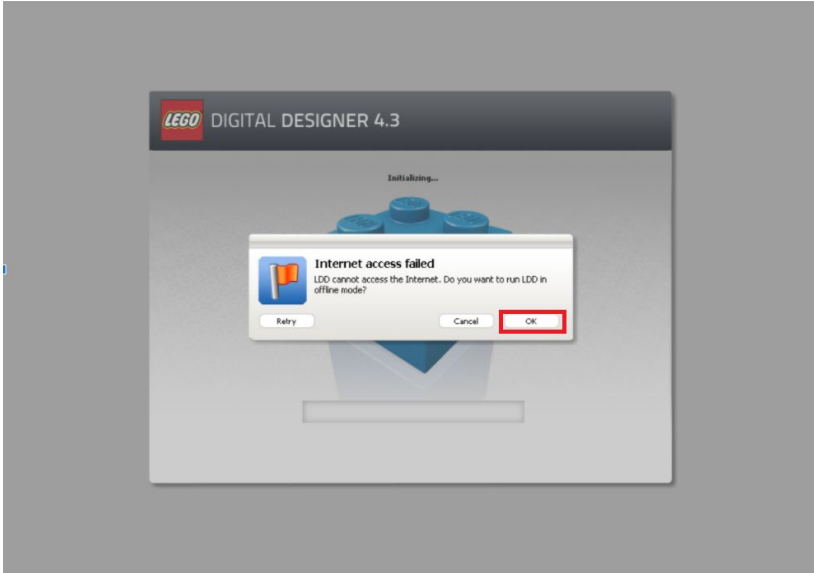
9. The default Install Destination is fine for most users, select "Install".



10. Select "Finish"



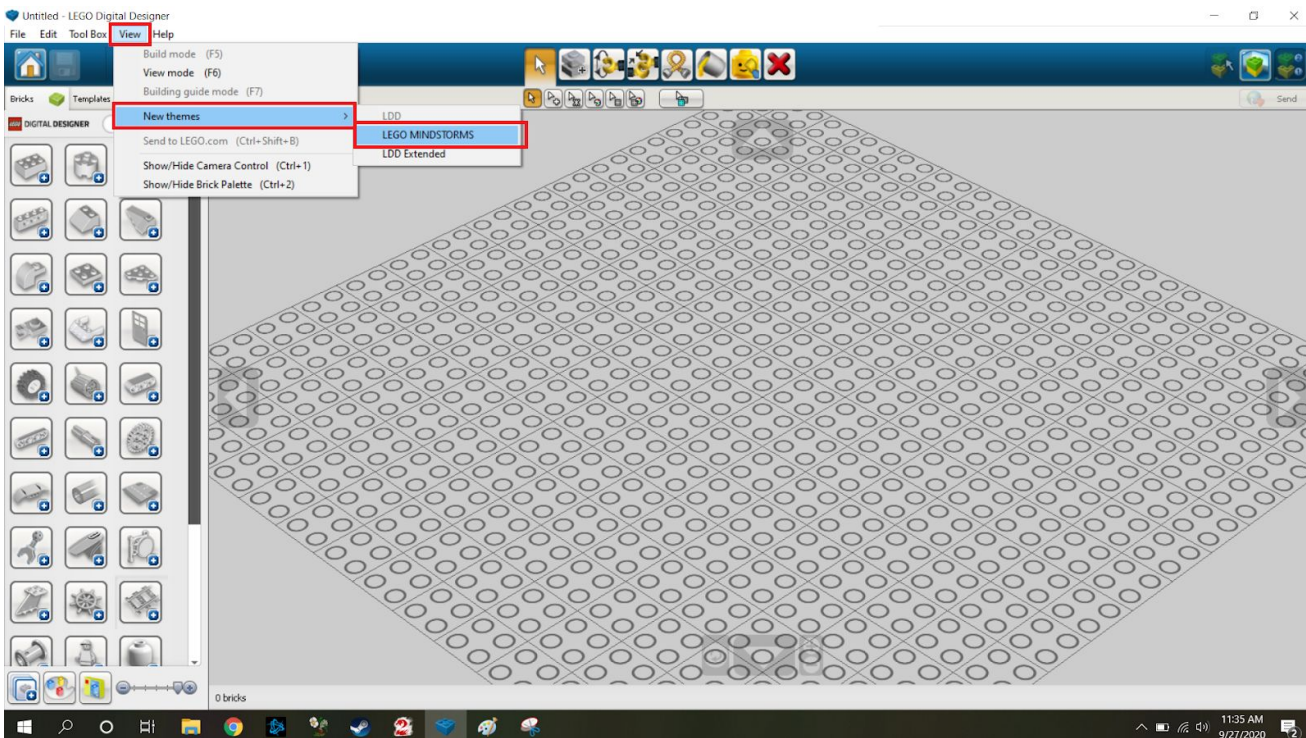
11. When you launch the program, it may prompt that it cannot connect to the internet. Just select “OK” to use the program offline. You will not need any of the online features for Unified Robotics.



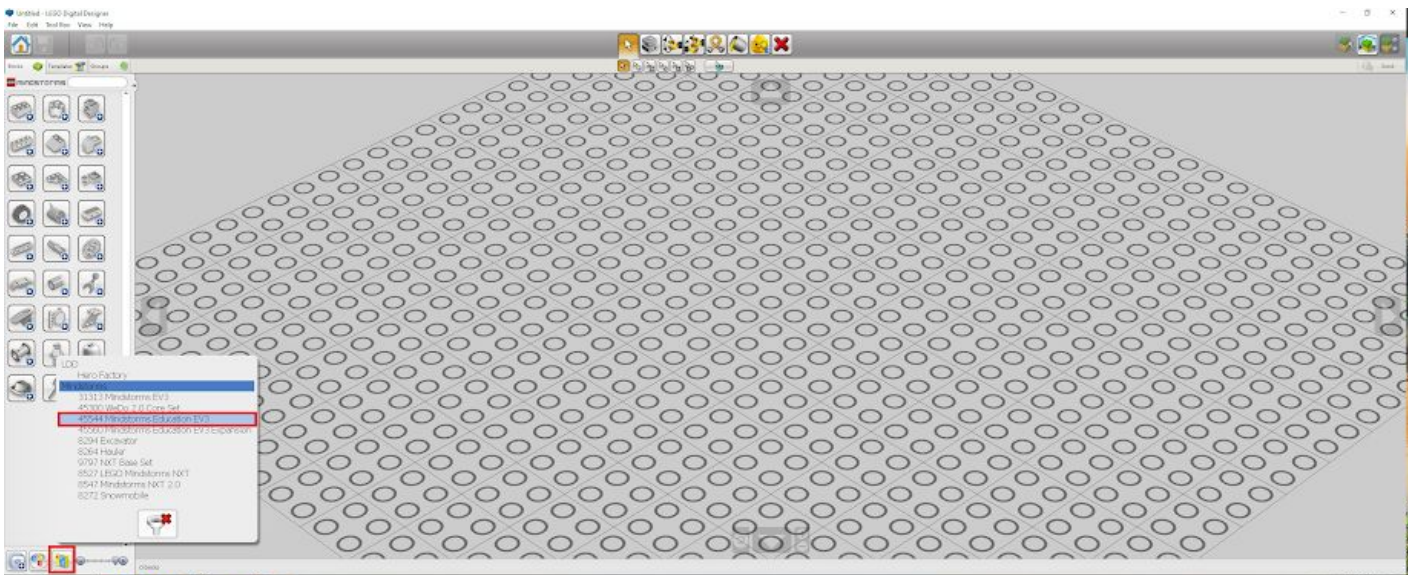
12. Select “LEGO Digital Designer” and then create New file



13. At the top of your screen, go to “View”, “New Themes” and select “LEGO Mindstorms”



14. At the bottom of your screen, click “Filter Bricks by Boxes” and select “45544 Mindstorms Educational EV3”.



It will now show only the LEGOs available in the EV3 kit. You are now able to start building your robot. Enjoy!

LEGO Mindstorms EV3

1. Go to website:

<https://education.lego.com/en-us/downloads/retiredproducts/mindstorms-ev3-lab/software>

2. Use the drop down to select Windows or Mac and select "Download":

Download the EV3 Lab Software v. 1.4.5

Windows (7, 8.1, 10) English (United States)

View System Requirements

DOWNLOAD

650 MB

If you have any LEGO MINDSTORMS Education EV3 product then you need to download this software. Includes teacher resources, a documentation tool, data logging, building instructions and tutorials.

3. When ready, open the Setup .exe file

View System Requirements

DOWNLOAD

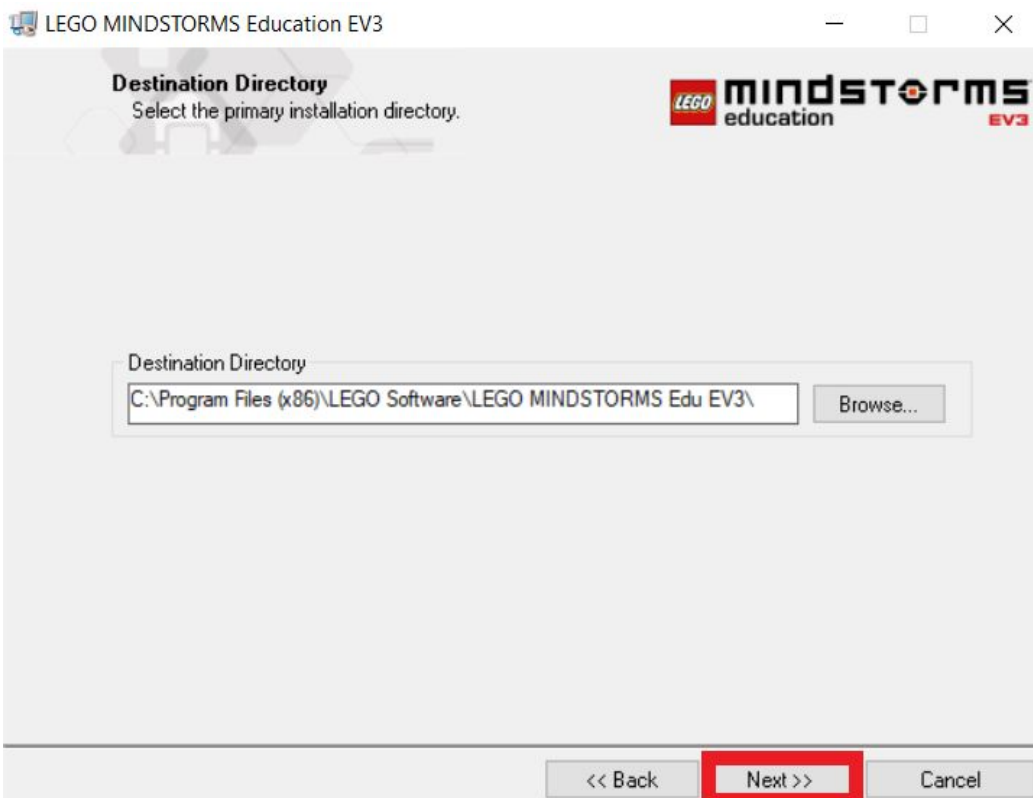
650 MB

If you have any LEGO MINDSTORMS Education

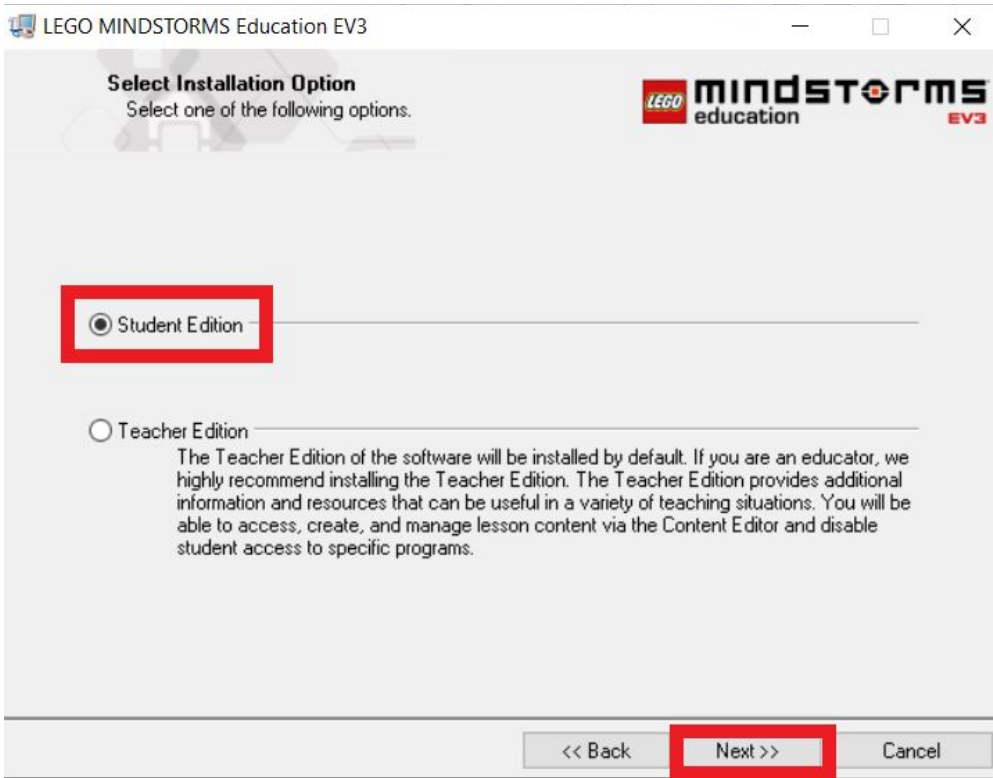
LME-EV3_Full-setu...exe
650/650 MB

4. If prompted, Select “Yes” to allow the program to make changes to your computer

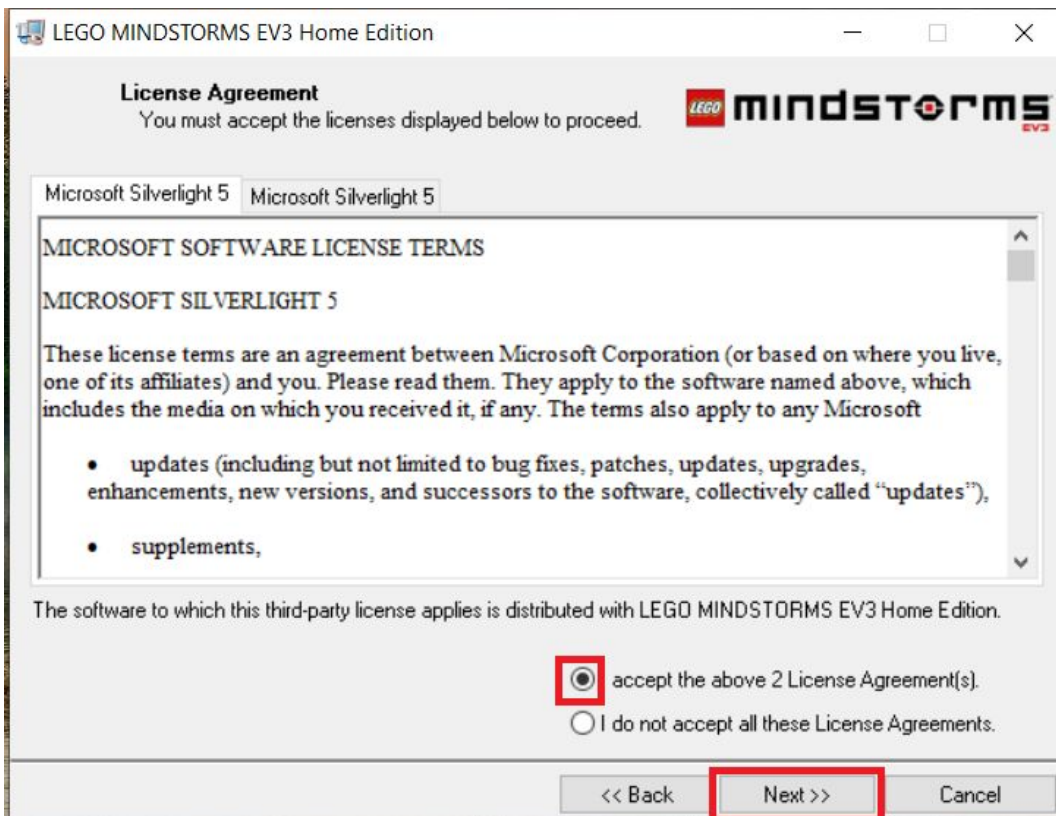
5. The default Install destination is fine for most users, select “Next”



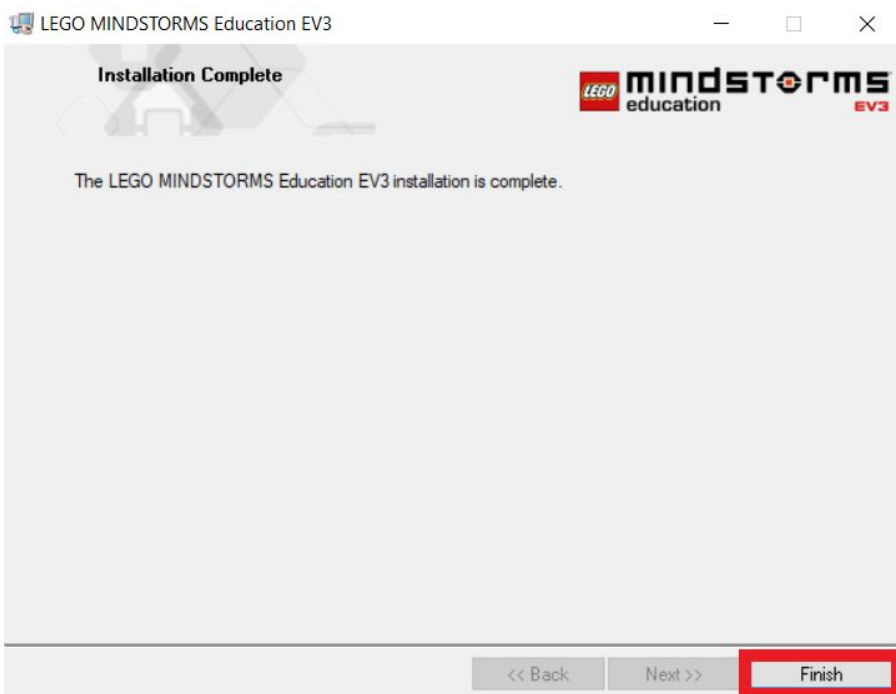
6. Select “Student Edition” and press “Next”:



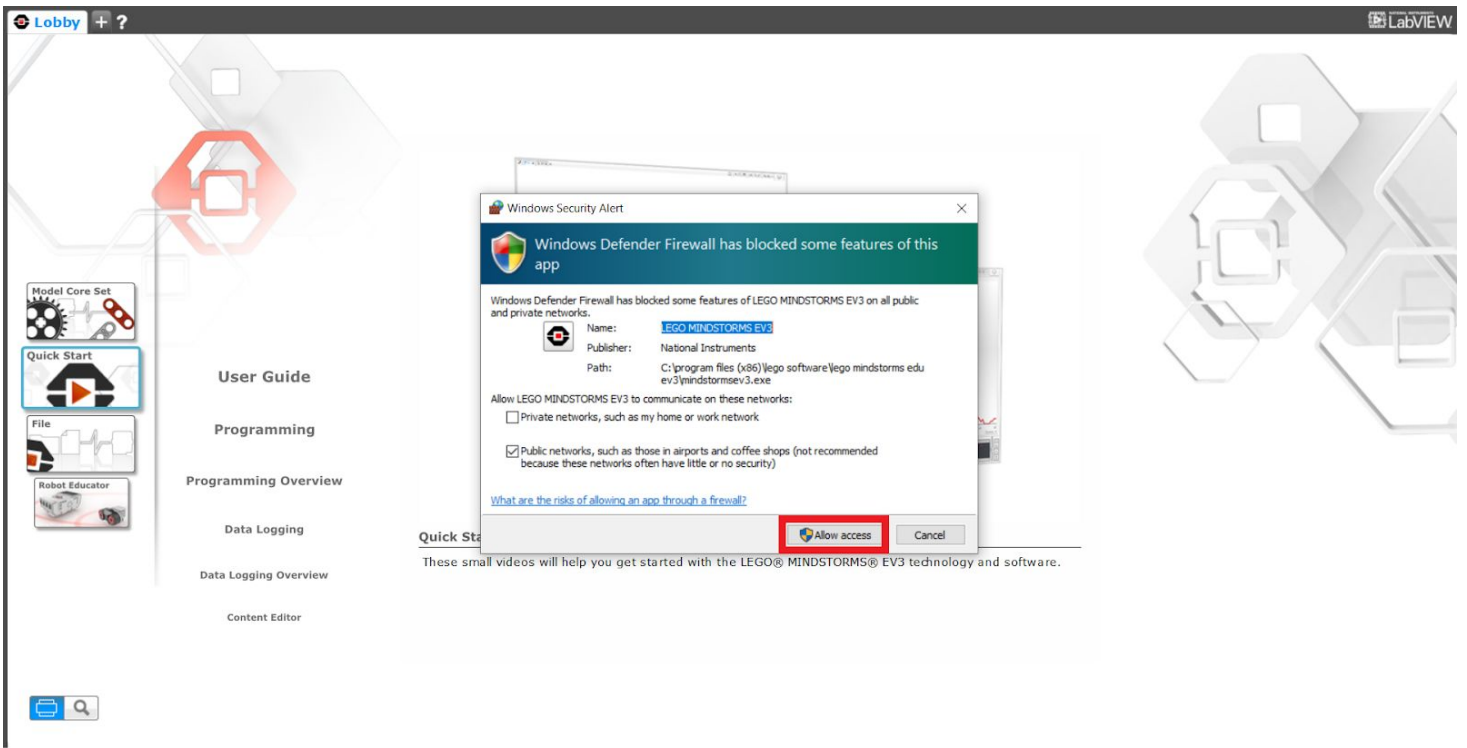
7. Check the box to “Accept the above 2 license agreements” and then select “Next” on the next two screens



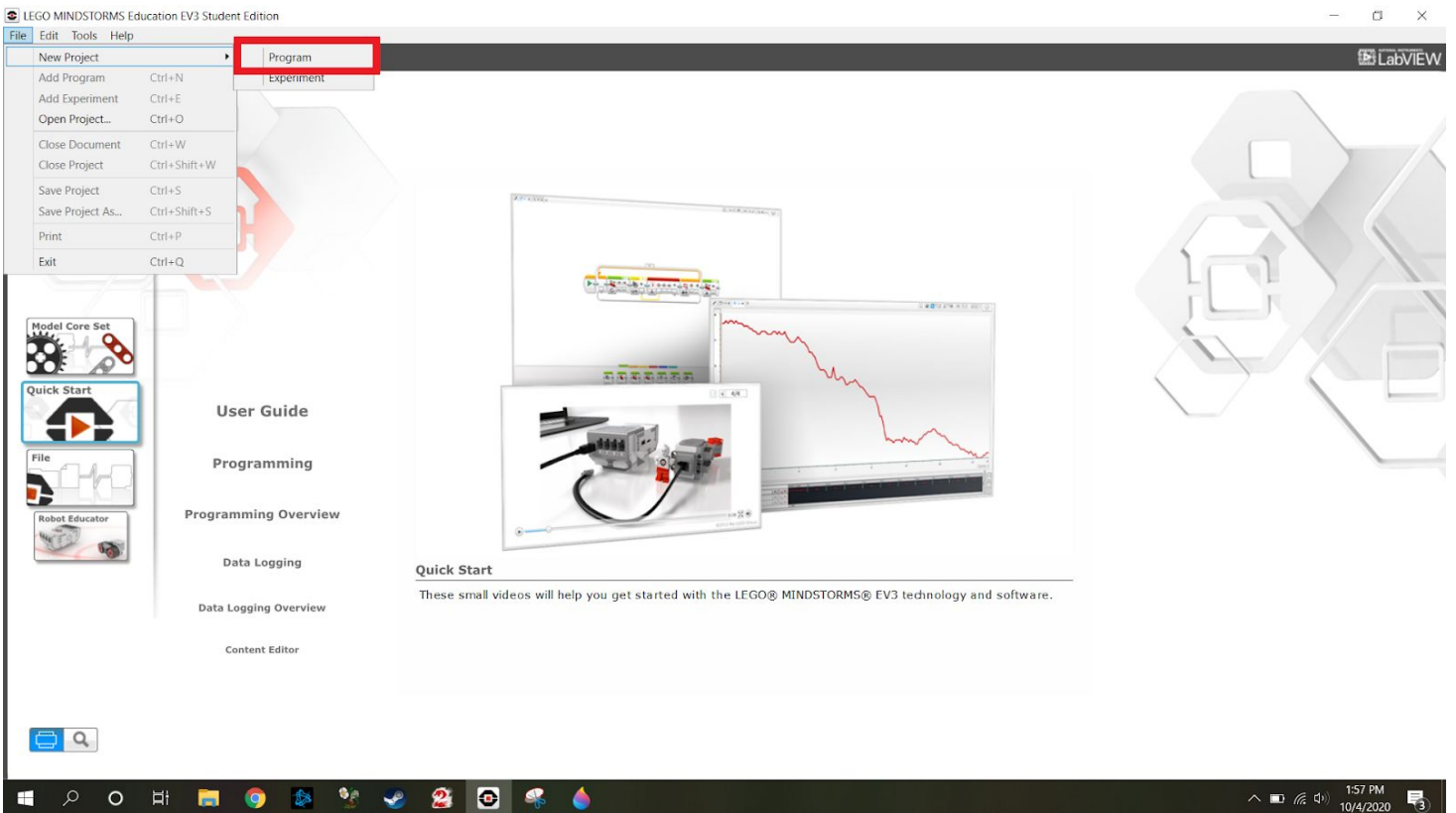
8. The program will start installing. When it is complete, select "Finish"

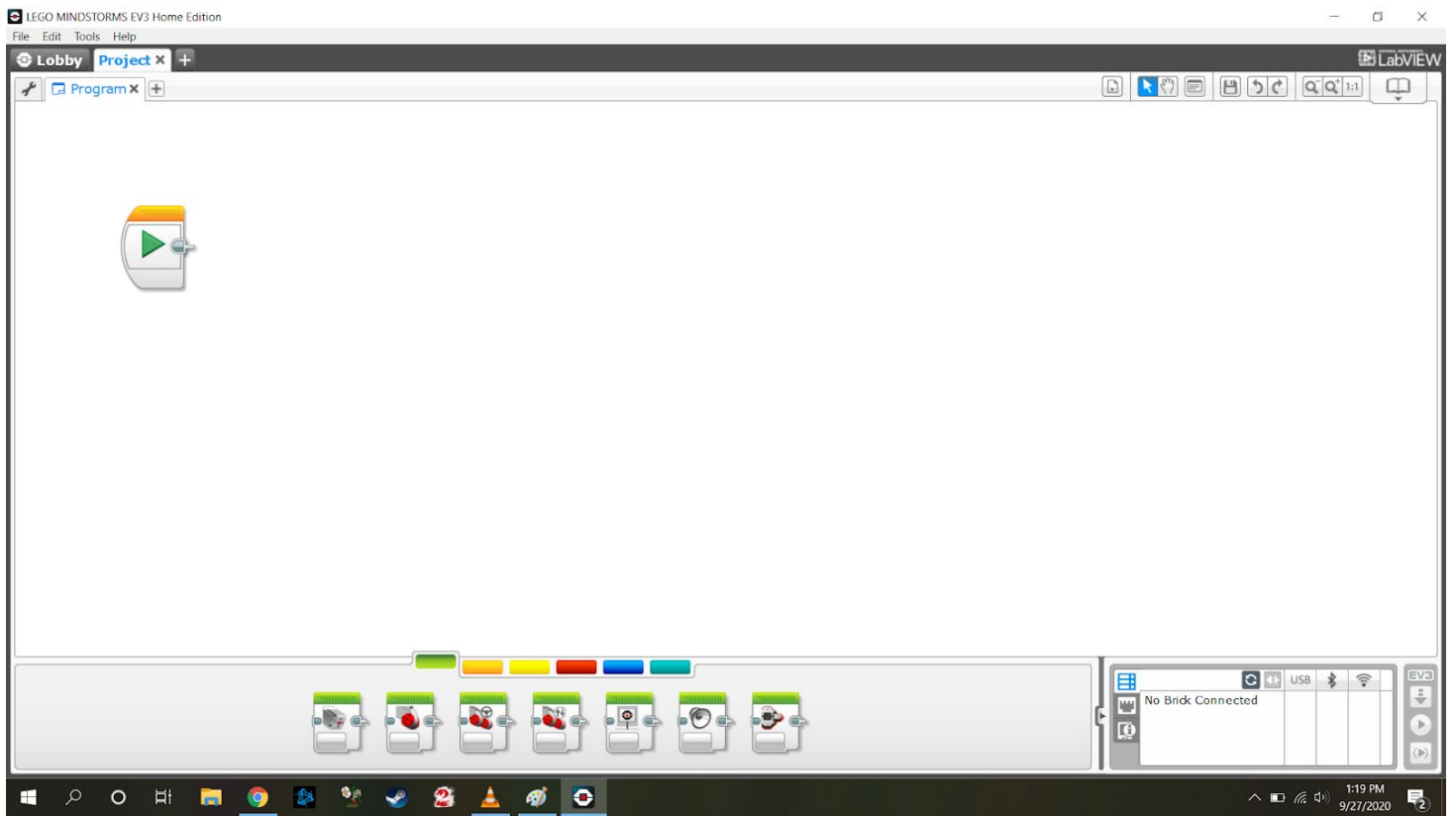


9. When you launch the program, Windows Defender may prompt you to change your settings. To allow Lego MINDSTORMS EV3 access to the internet, simply select "Allow Access".



10. At the top, click on “File”, “New Project”





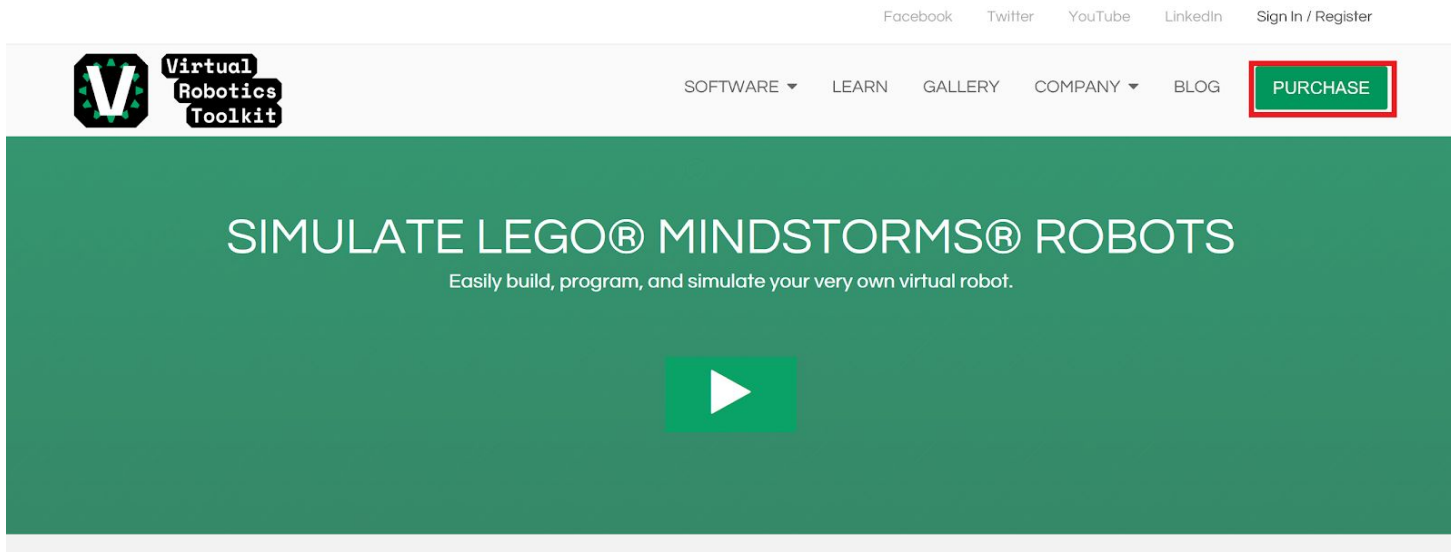
You can now start programming your robot.

Virtual Robotics Toolkit

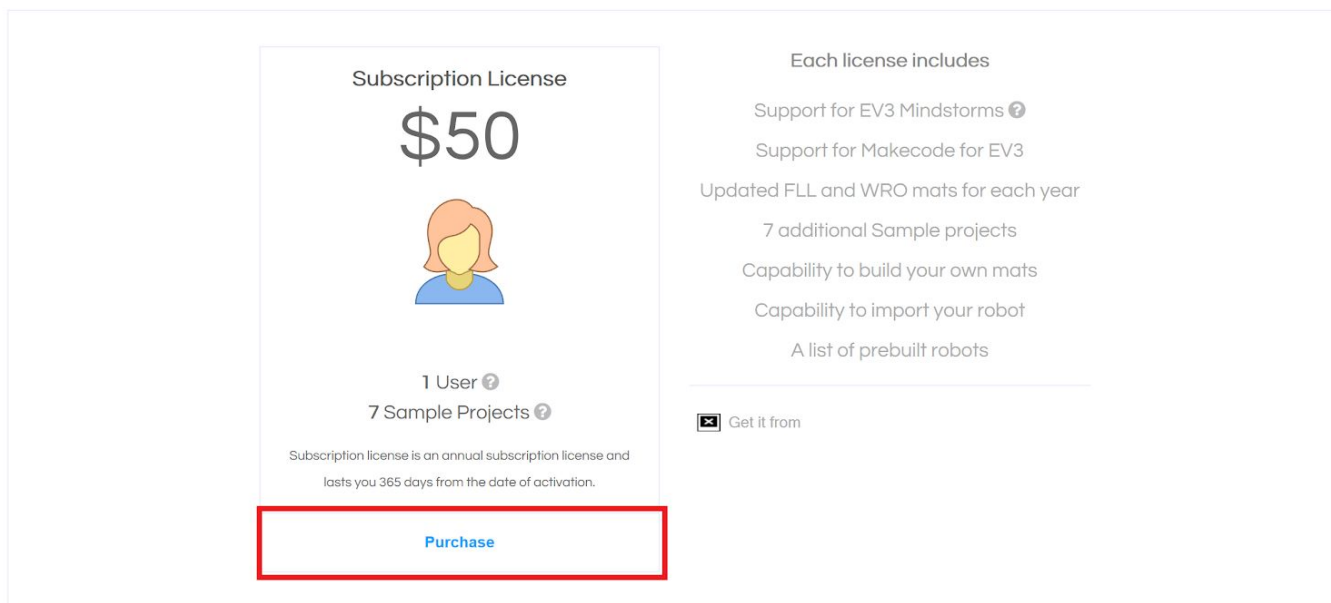
1. Go to website:

<https://www.virtualroboticstoolkit.com/>

2. Click Purchase.



3. Select "Purchase" for the subscription license. (This grants 365 days of activation)



4. VRT uses Google for authentication. Select “Login with Google” (The next steps will require a Google account.)

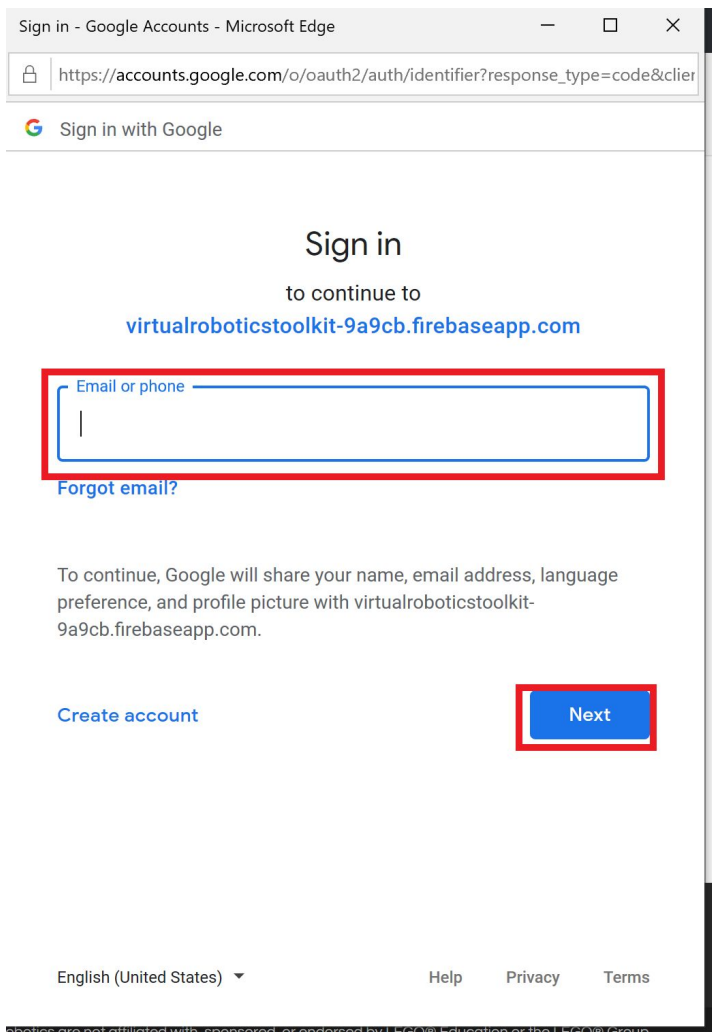


WELCOME BACK

To proceed to your account, login with one of the options below.



5. Enter your Google Email address and click “Next”



6. Enter your Google password and click “Next”

Sign in - Google Accounts - Microsoft Edge

https://accounts.google.com/signin/v2/challenge/pwd?response_type=code&clie

Sign in with Google

Hi [redacted]

[redacted]@gmail.com

Enter your password

To continue, Google will share your name, email address, language preference, and profile picture with virtualroboticstoolkit-9a9cb.firebaseio.com.

[Forgot password?](#)


https://accounts.google.com/TOS?loc=US&hl=en&privacy=true

English (United States) Help Privacy Terms

on Robotics are not affiliated with, sponsored, or endorsed by LEGO® Education or the LEGO® Group.

7. Fill in your information:




- Name
- Credit Card information
- Check the box agreeing to the Terms of Service
- As Cogmotion is Canadian, I had a \$0.50 transaction fee when ordering
- Click “Complete Order”



Billing Information

Full Name Email

Country
 United States of America

Card Number
   

Expiration Date (MM/YYYY)
 Month Year CVC (?)


Order Summary

Product	Qty.	Total
Virtual Robotics Toolkit Subscription	1	\$50
	Subtotal	\$50
	Total	\$50 USD

want to receive new and special offers
 agree to the [Terms of Service](#)

[Complete Order](#)

8. The download links appear on the next screen. You should also receive an Email. (If you do not, contact the VRT support.) Click to Download the VRT installer.





SOFTWARE ▾ LEARN GALLERY COMPANY ▾ BLOG [PURCHASE](#)

Thank you for your purchase!

Your order number is You'll receive an email notification shortly with a copy of your receipt, download links, and activation keys. While you wait, use the links below to begin downloading.

[Print Receipt](#)

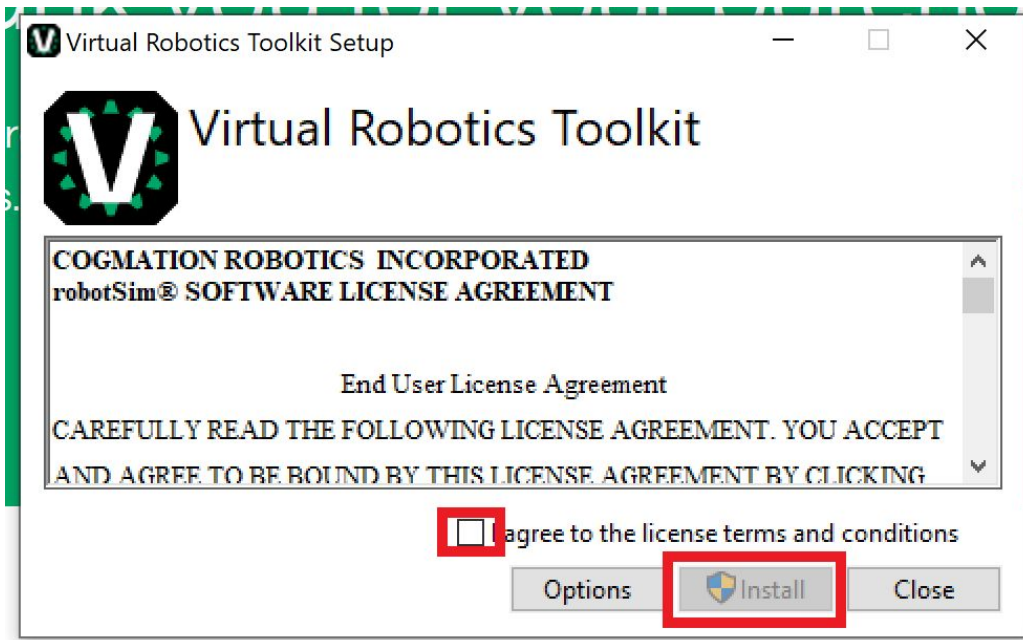
Product	Download Links
Virtual Robotics Toolkit Virtual Robotics Toolkit (VRTCS1) Subscription License (1 year) with NXT 6 EV3	Windows  Mac 

9. Once downloaded, click "Run"

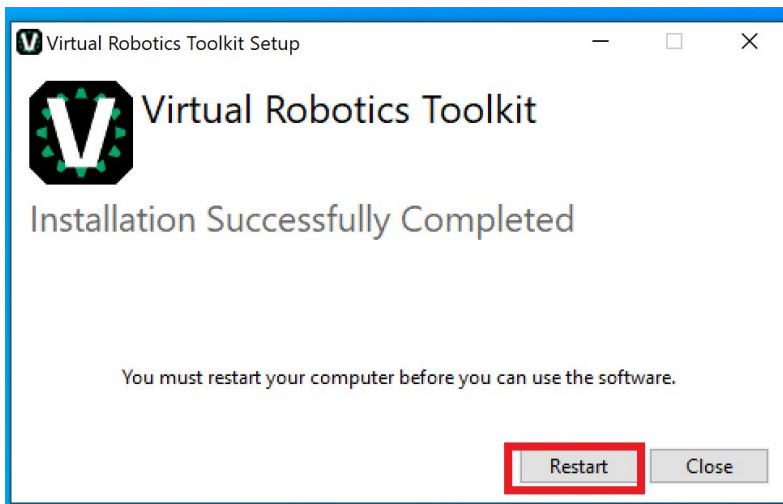
VirtualRoboticsToolkit.exe finished downloading.

[Run](#) [Open folder](#) [View downloads](#) ×

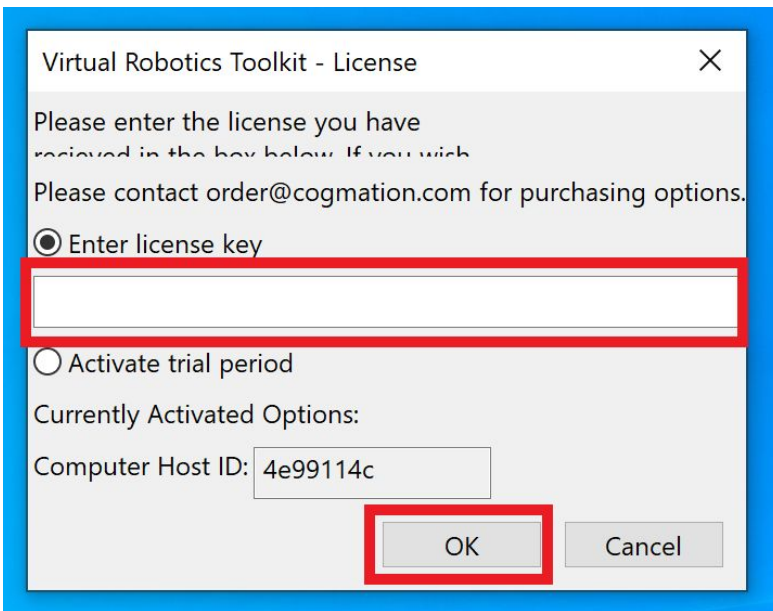
10. Accept the Terms and Conditions, and click “Install”



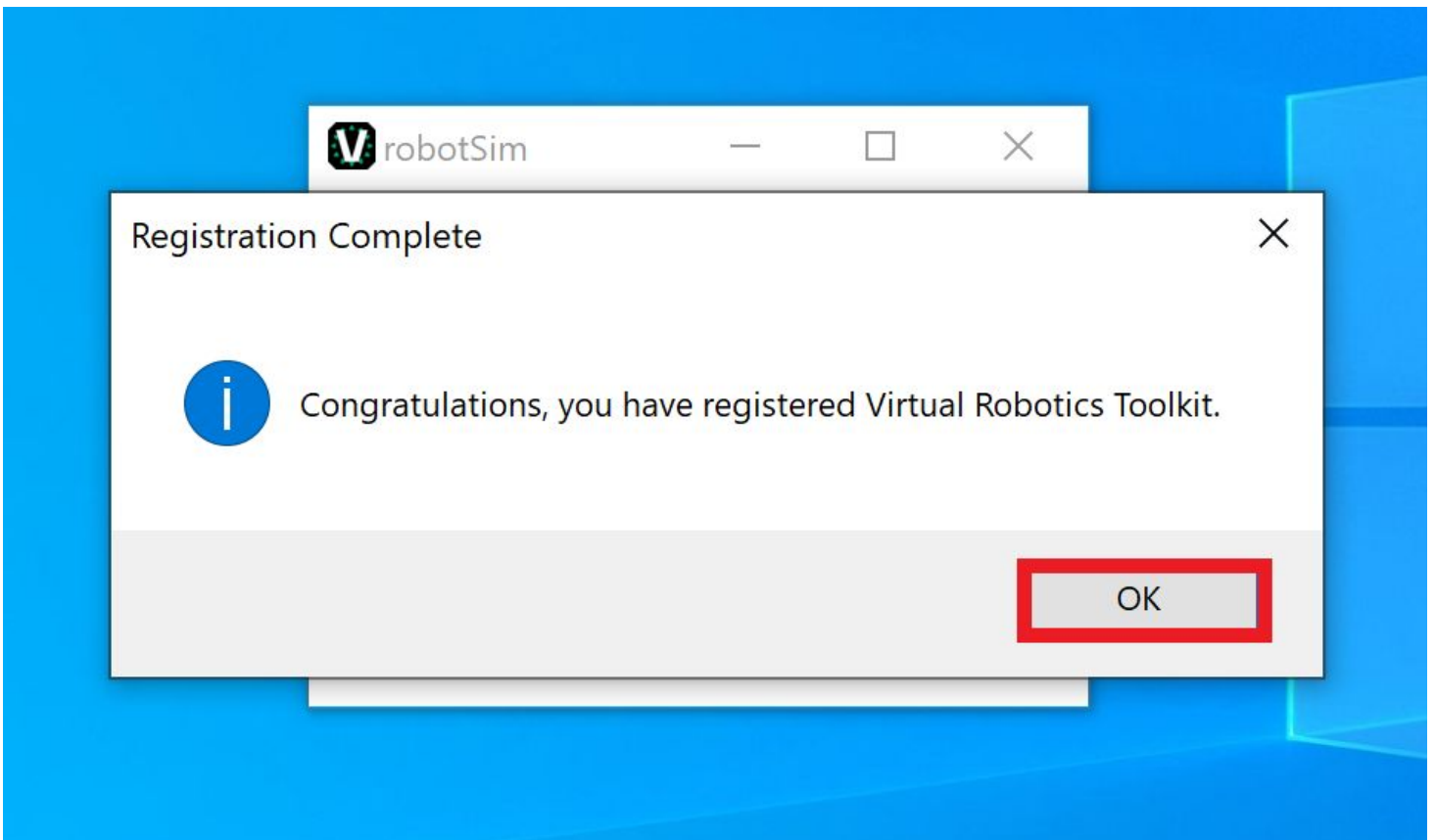
11. Once the installation is complete, click “Restart” to restart your computer. (Save any other open work!)



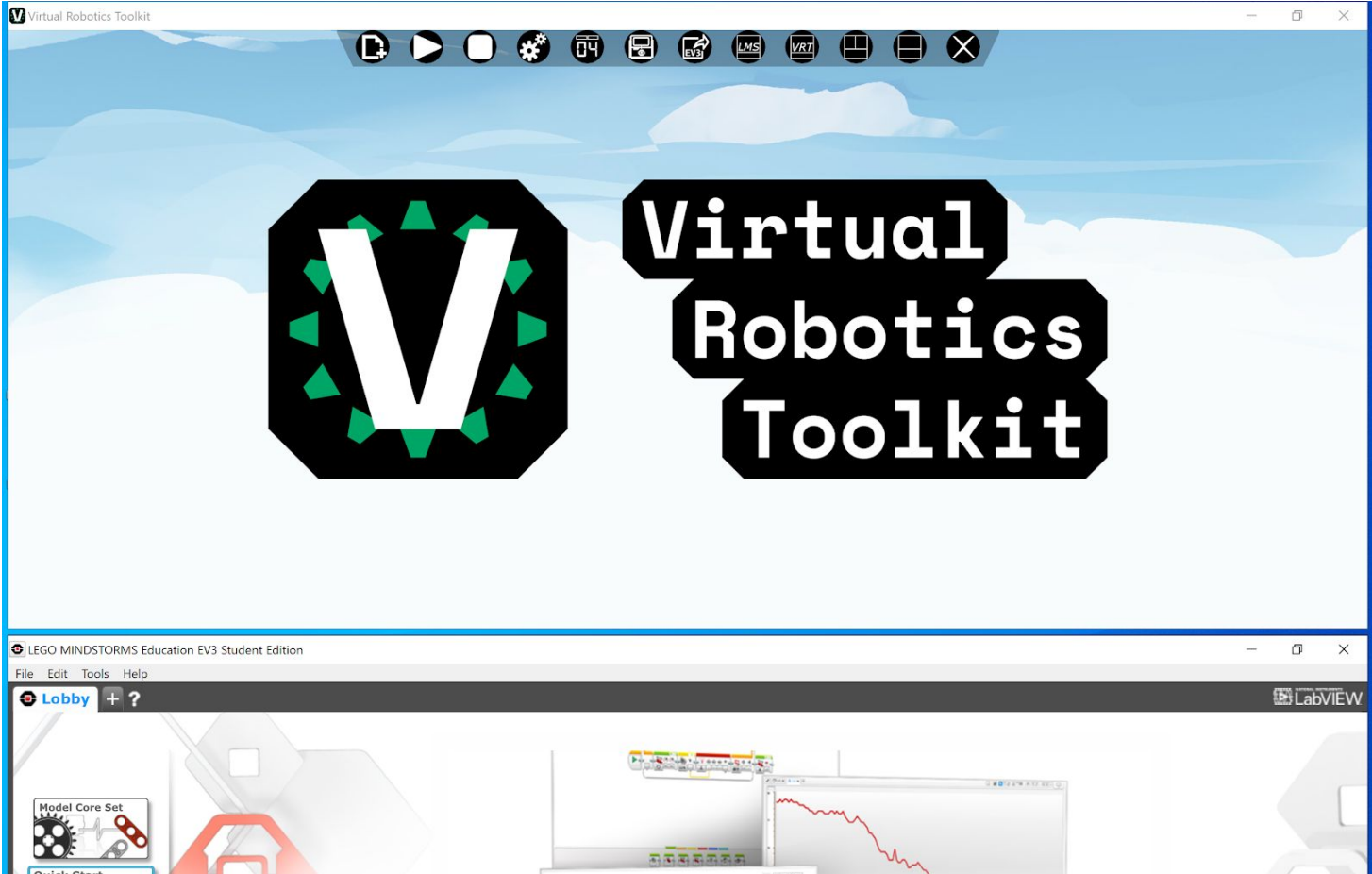
12. Open the Virtual Robotics Toolkit executable. From the Email, enter your license key and click “OK”.



13. If everything was successful, click "OK".



14. Virtual Robotics Toolkit main screen should open. This will also open LEGO EV3 Mindstorms.

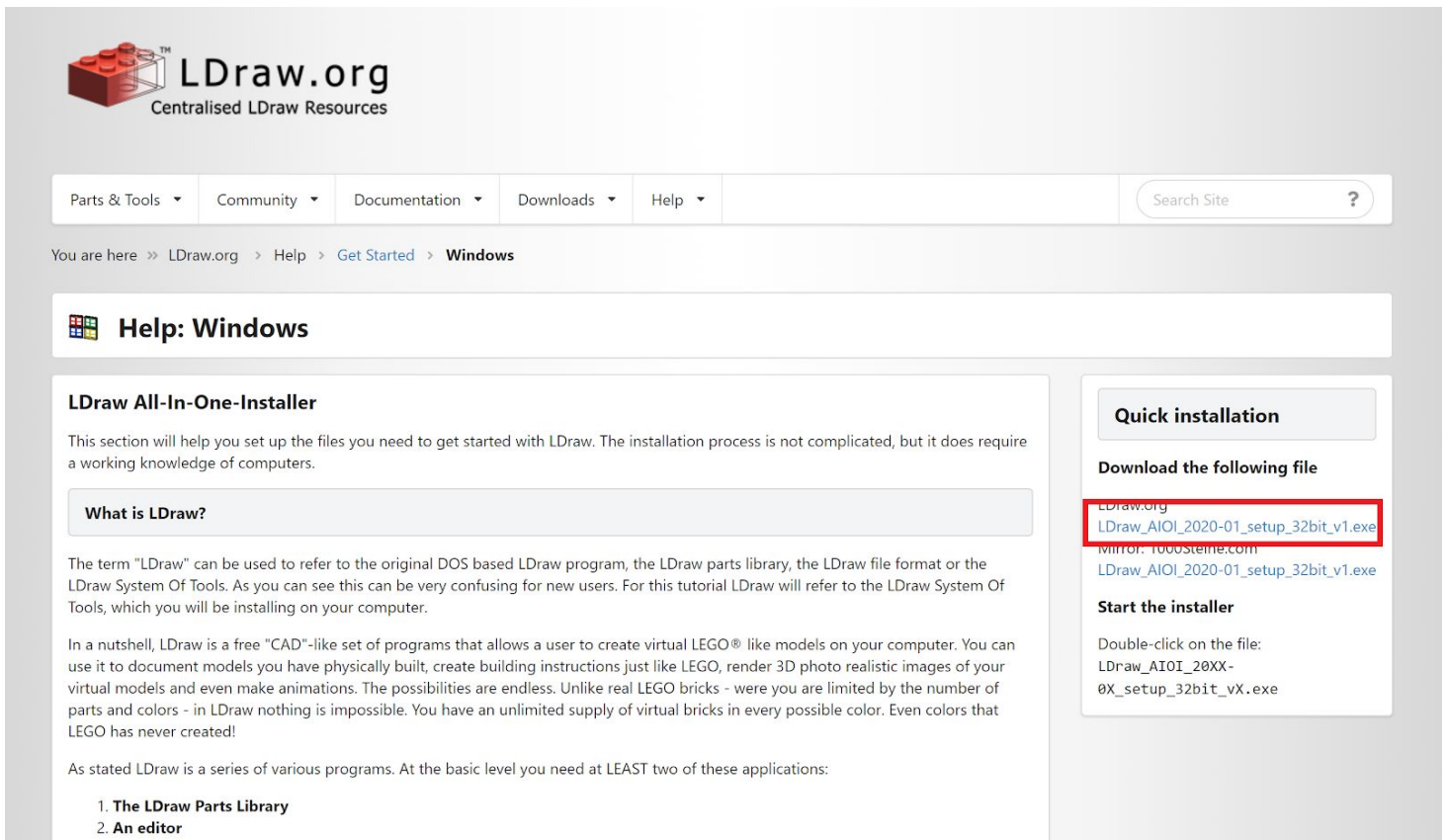


LDraw Library

1. Go to the website:

<https://www.ldraw.org/article/104.html>

2. Click the LDraw_AI0I (All In One Installer) to download



LDraw.org
Centralised LDraw Resources

Parts & Tools ▾ Community ▾ Documentation ▾ Downloads ▾ Help ▾ ?

You are here >> LDraw.org > Help > [Get Started](#) > **Windows**

Help: Windows

LDraw All-In-One-Installer

This section will help you set up the files you need to get started with LDraw. The installation process is not complicated, but it does require a working knowledge of computers.

What is LDraw?

The term "LDraw" can be used to refer to the original DOS based LDraw program, the LDraw parts library, the LDraw file format or the LDraw System Of Tools. As you can see this can be very confusing for new users. For this tutorial LDraw will refer to the LDraw System Of Tools, which you will be installing on your computer.

In a nutshell, LDraw is a free "CAD"-like set of programs that allows a user to create virtual LEGO® like models on your computer. You can use it to document models you have physically built, create building instructions just like LEGO, render 3D photo realistic images of your virtual models and even make animations. The possibilities are endless. Unlike real LEGO bricks - were you are limited by the number of parts and colors - in LDraw nothing is impossible. You have an unlimited supply of virtual bricks in every possible color. Even colors that LEGO has never created!

As stated LDraw is a series of various programs. At the basic level you need at LEAST two of these applications:

1. **The LDraw Parts Library**
2. **An editor**

Quick installation

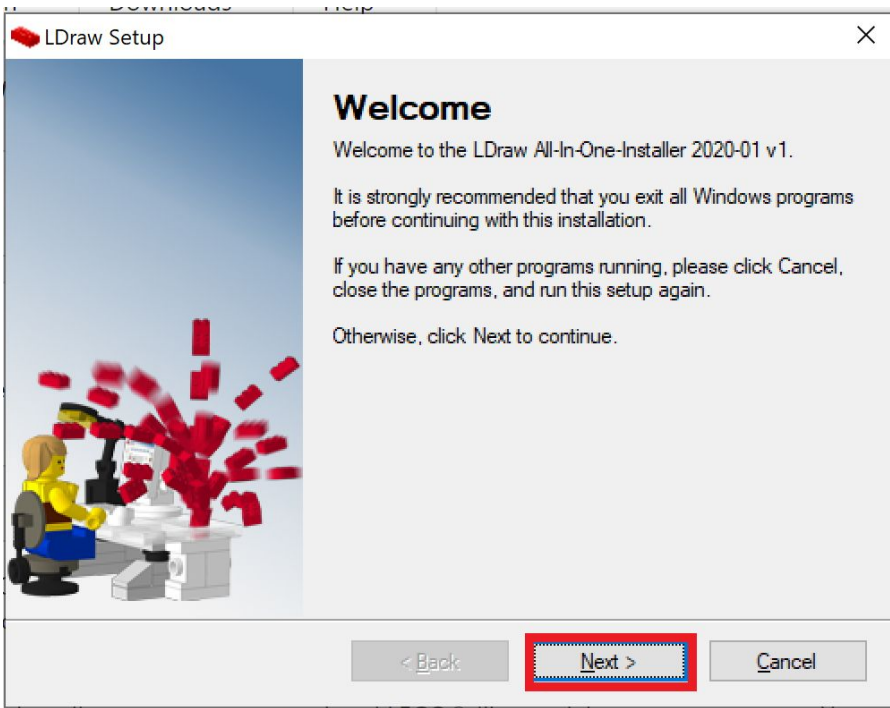
Download the following file

[LDraw.org](#)
[LDraw_AI0I_2020-01_setup_32bit_v1.exe](#)
[Mirror: 1000steine.com](#)
[LDraw_AI0I_2020-01_setup_32bit_v1.exe](#)

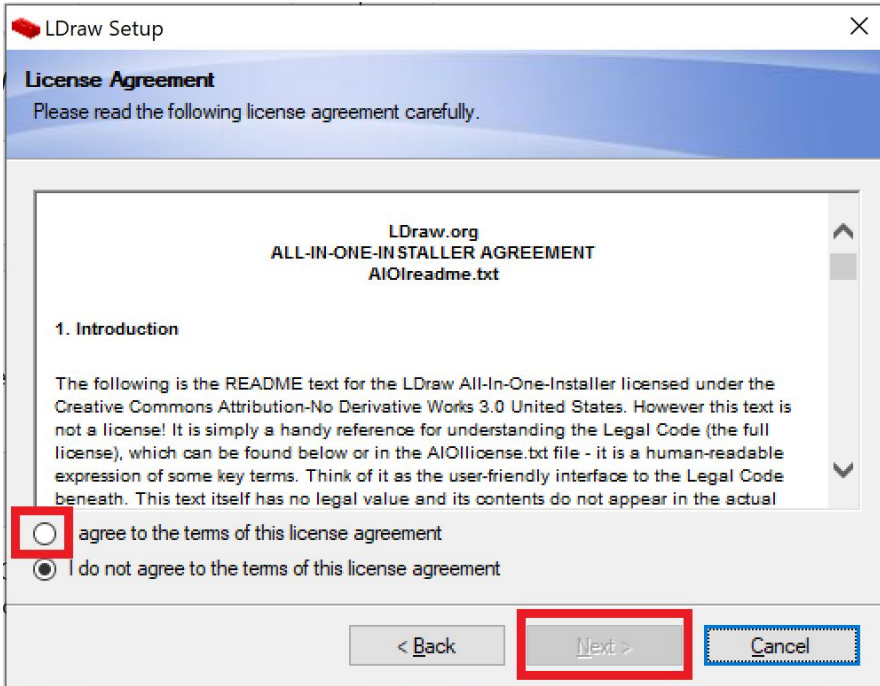
Start the installer

Double-click on the file:
LDraw_AI0I_20XX-
0X_setup_32bit_vX.exe

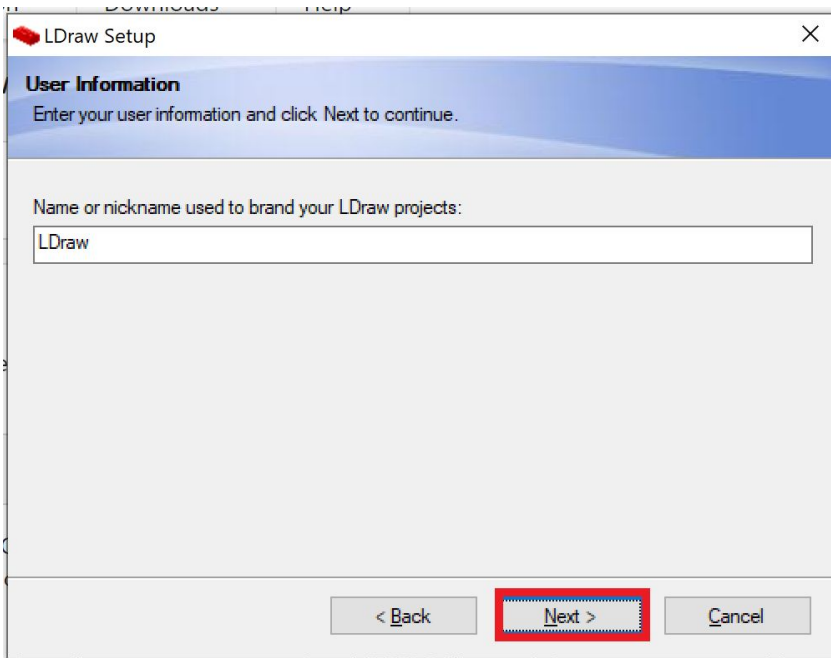
3. Run the Installer. On the Welcome screen, click "Next".



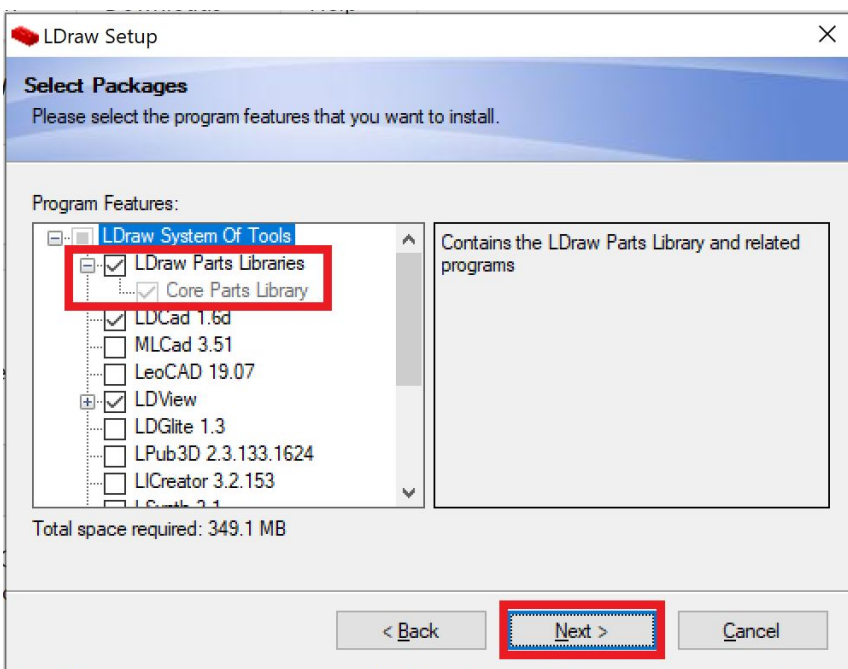
4. Click the button to agree to the terms, and click “Next”



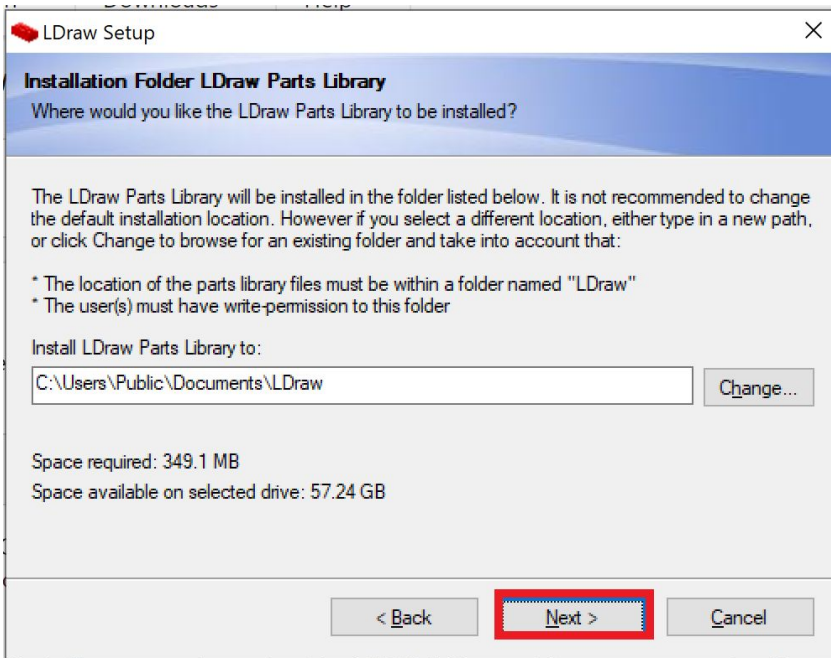
5. Optional, choose a nickname for your projects. (I left this as default). Click “Next”.



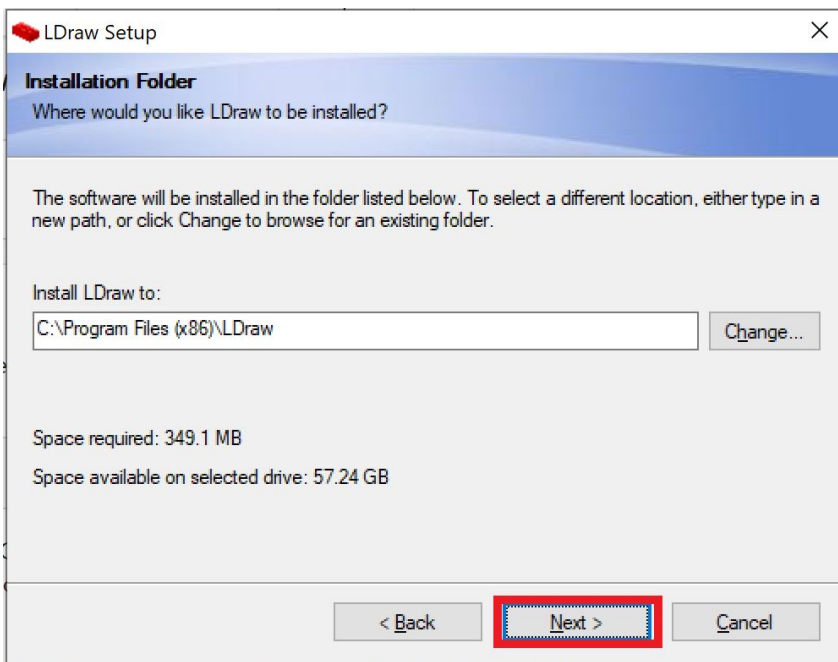
6. IMPORTANT! Make sure LDraw Parts Libraries and Core Parts Library are selected! Add any optional libraries you may like to install. (I left this as default). Select "Next".



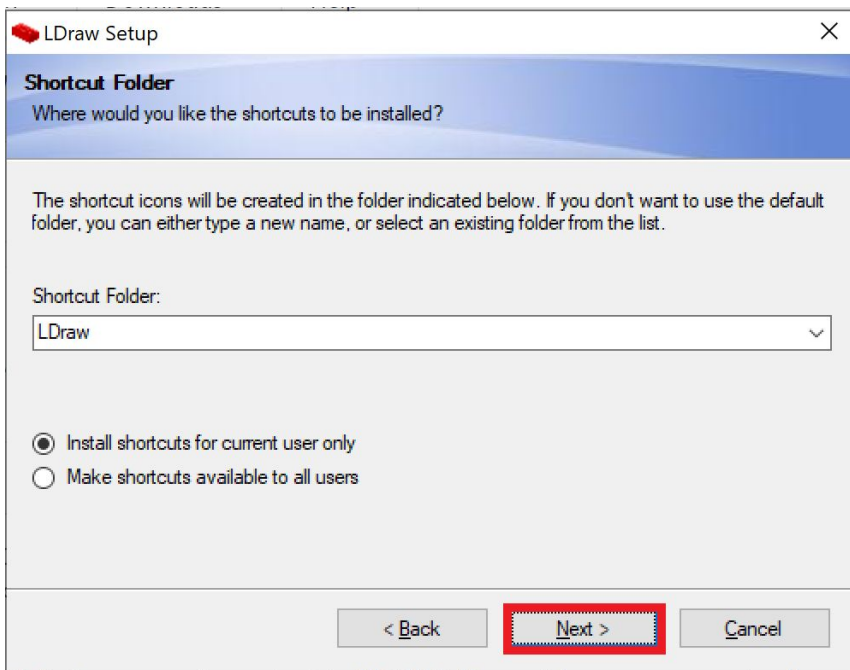
7. Optional, you can specify where to install the LDraw Part Library. (I left this as default). Select "Next".



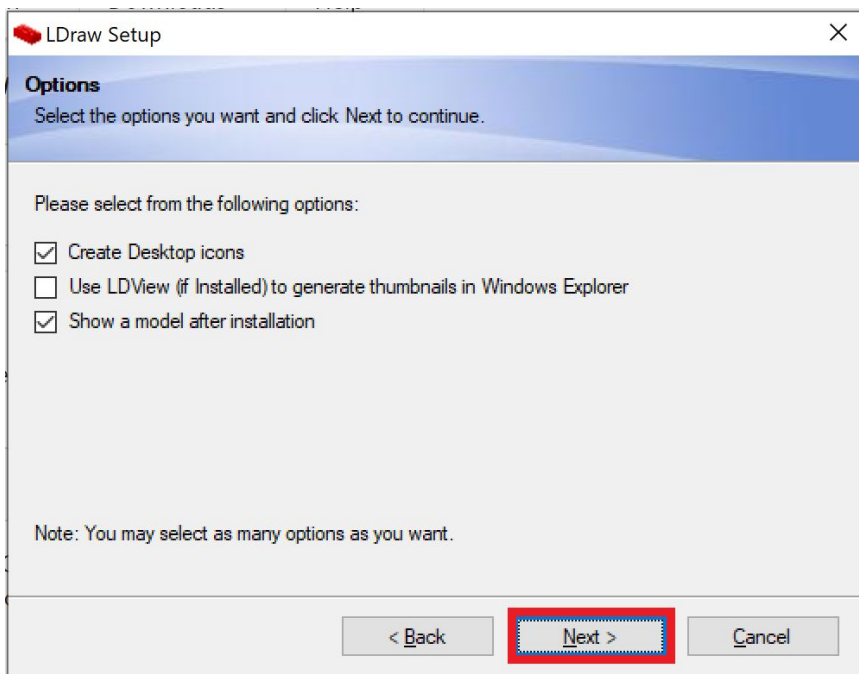
8. Optional, you can specify where to install the LDraw program. (I left this as default). Select “Next”.



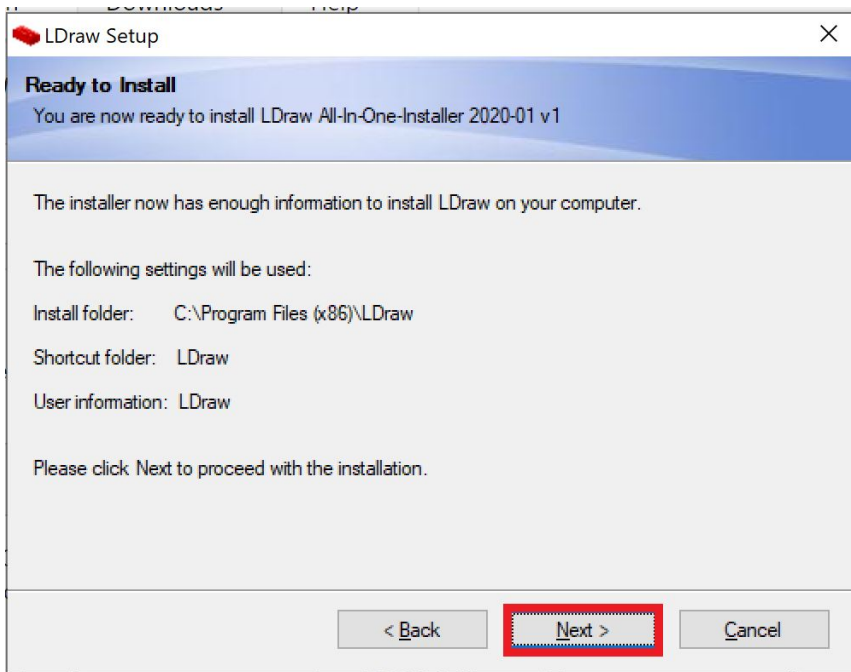
9. Optional, you can choose a name for the shortcut folder and availability. (I left this as default). Click “Next”.



10. Choose any of the listed options for icons and running LDraw. Click “Next”.



11. Click “Install” to begin the installation. This may take a while, on a Microsoft Surface, this took about 15 minutes.



12. With the LDraw Parts library installed, you should now be able to import all pieces of your robot from Lego Digital Designer into Virtual Robotics Toolkit! (Guide coming soon!)

13. There are always LEGO bricks getting added and updated. If you are having trouble loading pieces of your robot, there is a download and instructions for some of the later bricks available here:

<https://www.eurobricks.com/forum/index.php?/forums/topic/137193-more-up-to-date-ldrawxml-lddldraw-conversion-file/>